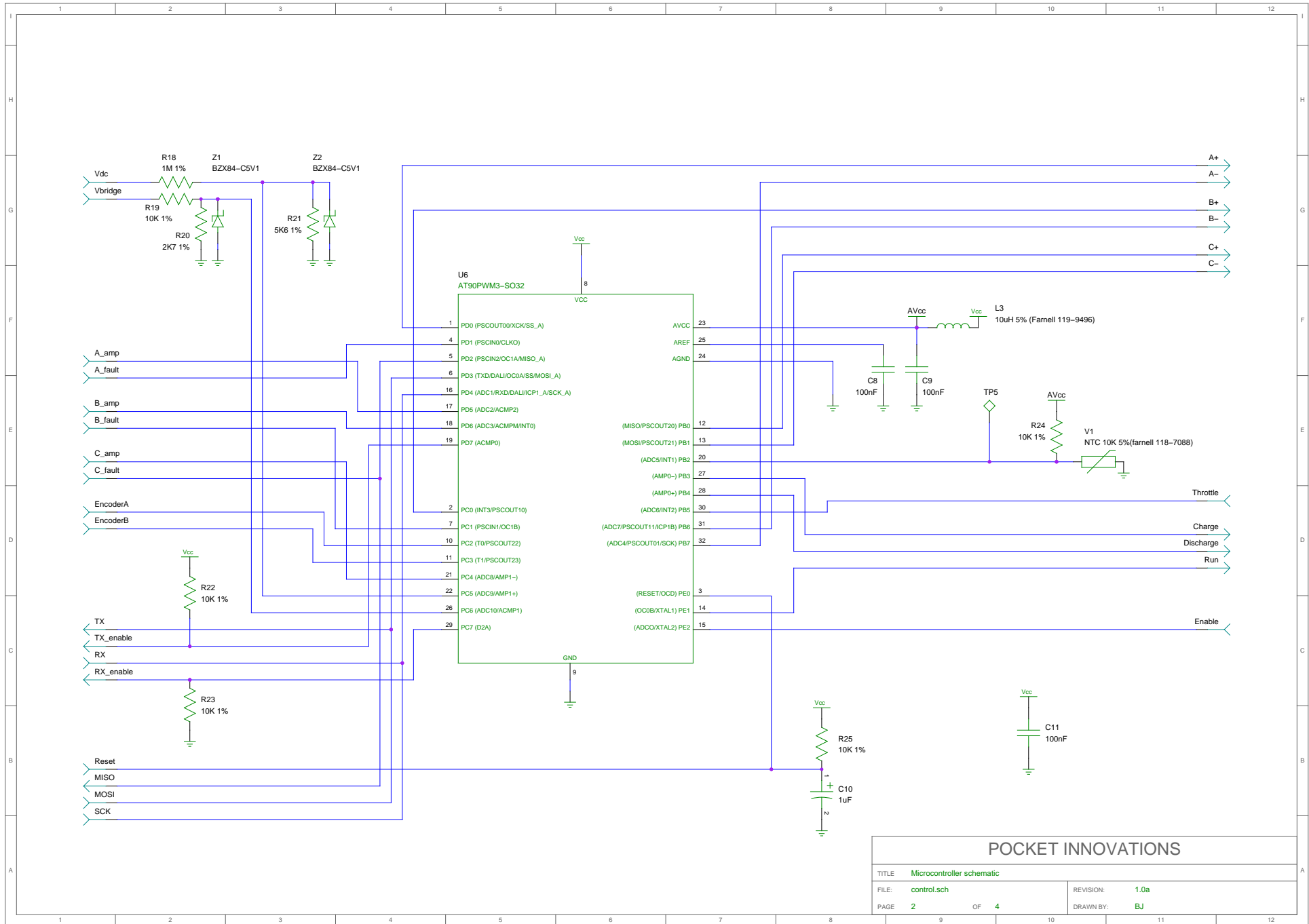


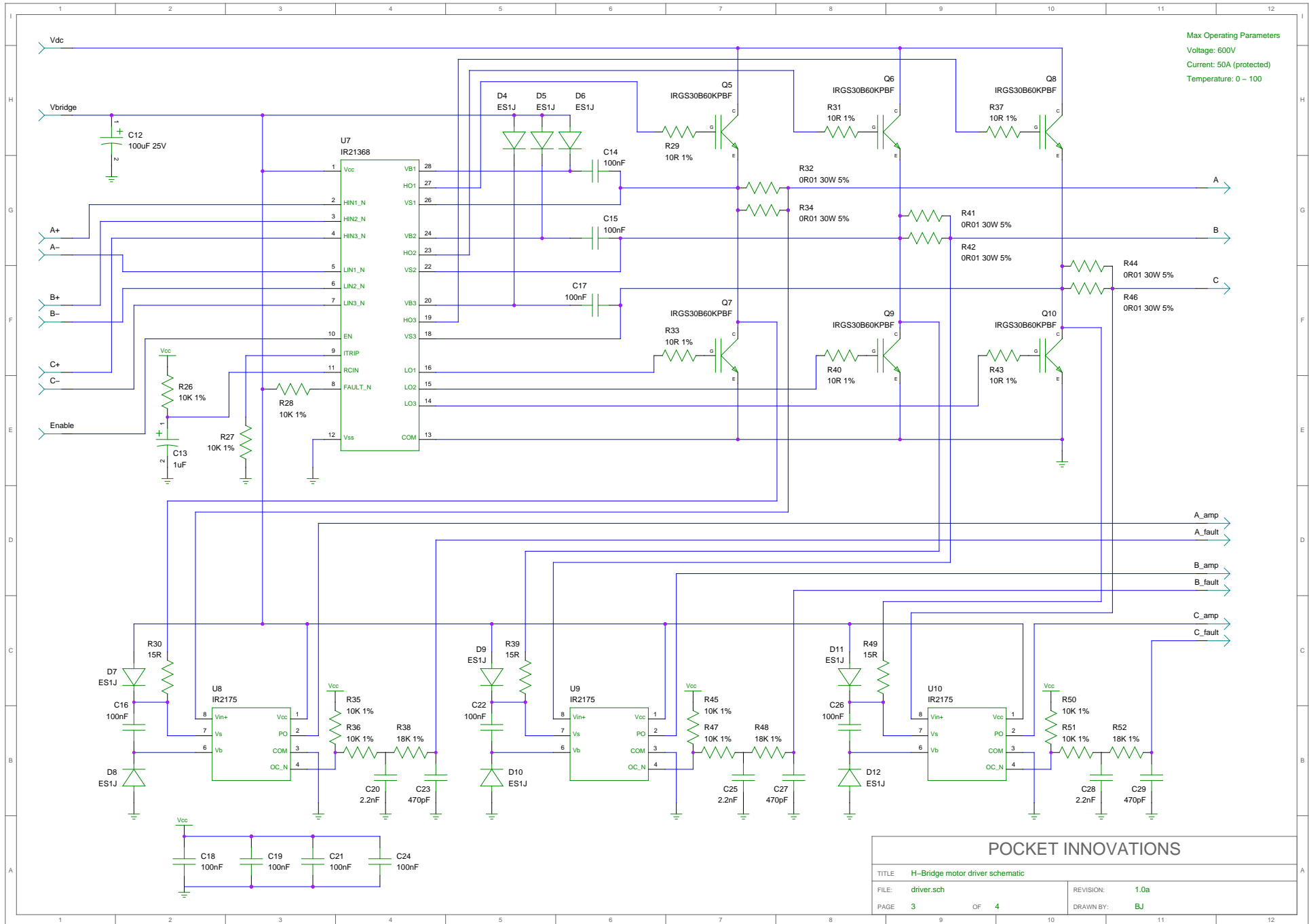
Warning: This circuit is designed to switch high voltage and currents which can kill. Please do not build it unless you understand the voltages and the risks associated with them. The author of this circuit does not accept any liability incurred by the use of this circuit.

Warning: The RS485 and AVR ISP connections are not isolated, so take care if powering Vdc from a non-isolated mains supply.

### POCKET INNOVATIONS

TITLE: 3-Phase Motor Controller (PI081211)		REVISION: 1.0a	
FILE: main.sch	PAGE 1 OF 4		DRAWN BY: BJ





Max Operating Parameters  
 Voltage: 600V  
 Current: 50A (protected)  
 Temperature: 0 - 100

<b>POCKET INNOVATIONS</b>	
TITLE: H-Bridge motor driver schematic	
FILE: driver.sch	REVISION: 1.0a
PAGE: 3 OF 4	DRAWN BY: BJ

